

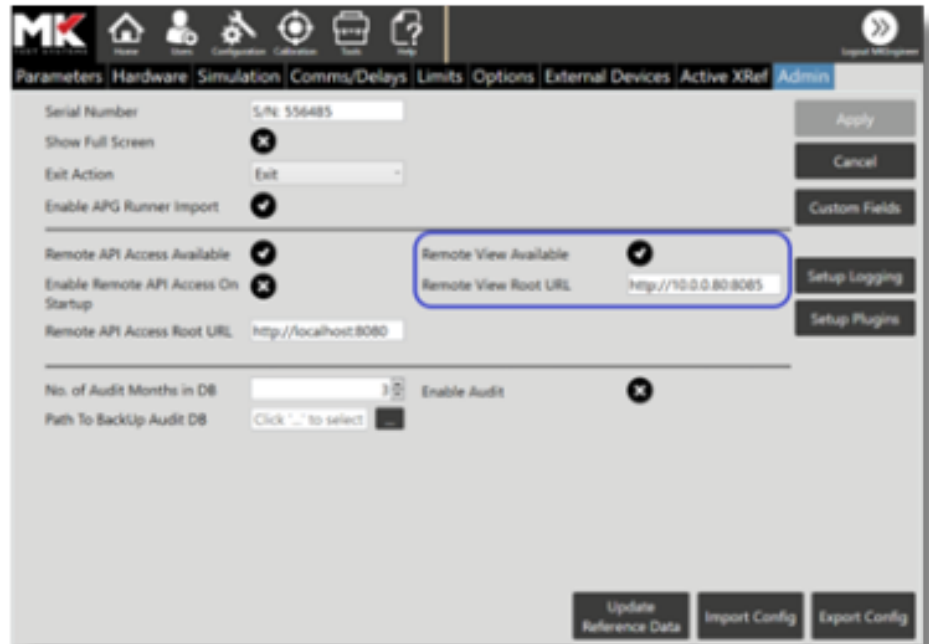
*How to:*

# CONTROL MKAT RUNNER SOFTWARE USING A REMOTE DEVICE



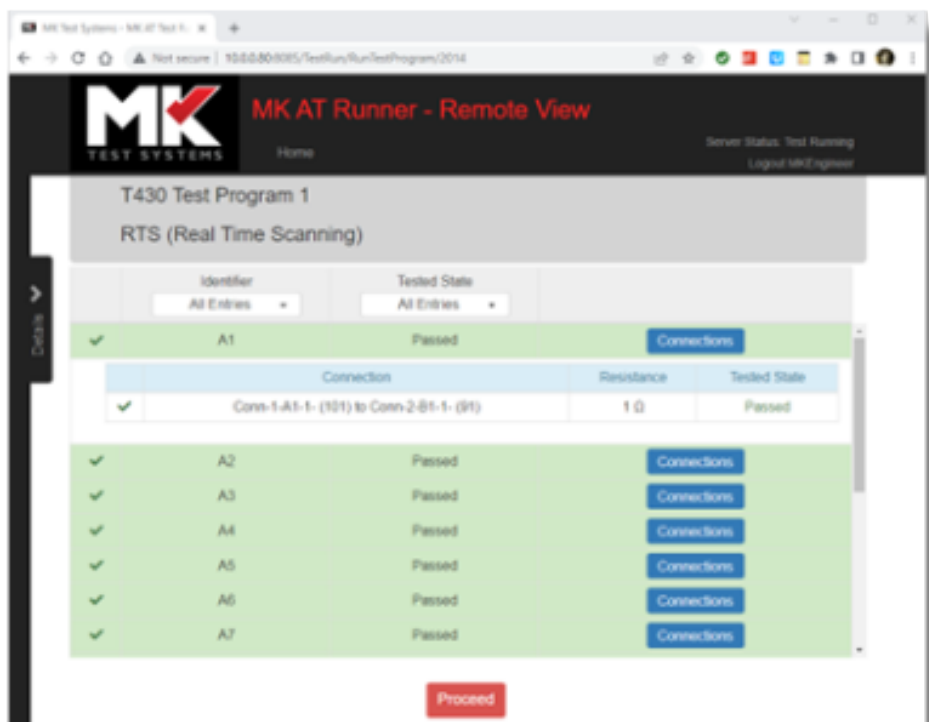
The MKAT Runner software can be controlled remotely by another device on the same network, via a web browser. This quick guide shows you how to achieve this in just a few steps:

1. From the Runner Home screen, select 'Configuration'
2. Select the 'Admin' tab
3. Enable the 'Remote View Available' option
4. Amend the 'Remote View Root URL' to show the IP address and port of the host machine. (You may need to speak to your IT administrator for help with this)



The Runner software can now be accessed remotely as follows:

5. On the remote device, open a web browser (Chrome is recommended)
6. In the address bar, enter the URL set up in Remote View Root URL
7. Operators can log in using their usual credentials
8. The Runner software can now be controlled remotely.



### *Good to know:*

All the major functionality is still supported when using the remote control option.



www.mktest.com | sales@mktest.com | service@mktest.com

UK: +44 (0)1823 661100 | US: +1 773 569 3778 | HK: +852 9303 0048